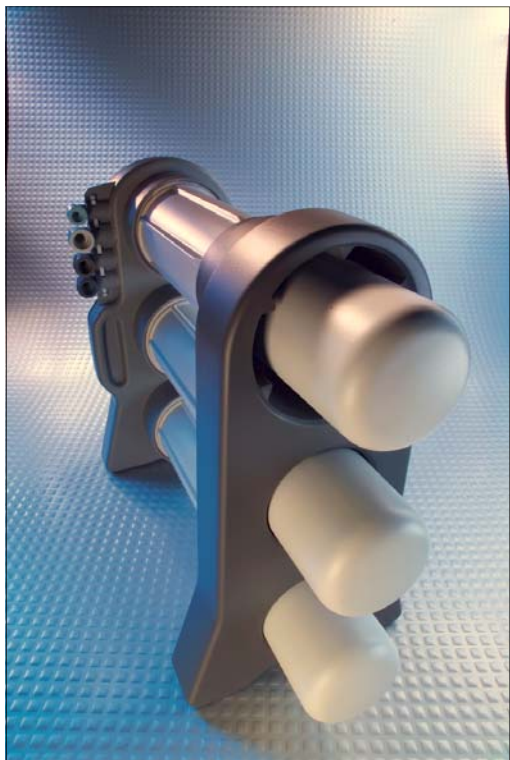


AQUAcure® Merlin RO



NEVER RUNS DRY

Continuous clean, clear water flows at 1.89LPM.
(Based on 3.44 bar, 25°C, 750 mg/L NaCl, 24% recovery.)

NO TANKS

Saves space. Loss of tank pressure and contamination worries are eliminated.

ENGINEERED EFFICIENCY

Uses line pressure only (>40 psi/2.76bar to <80 psi/5.52bar). Requires no pump, no electricity. Consistent high recovery system means less water going to drain.

ALL THE RIGHT CONNECTIONS

Engineered for the fewest number of connection points—less chance of leaks.

SLEEK GOOD LOOKS

Contemporary, stylish design.

TOUGH STUFF

High durability Noryl and polypropylene plastic construction = years of dependable service.

SEAL OF APPROVAL

WQA Gold Seal: ANSI-NSF 58 validated.

BEAUTY AND BRAINS

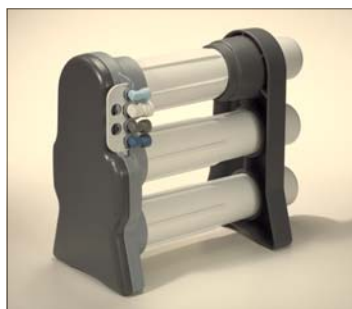
Innovative design, good looks and smart features like Quick-latch, integrated housing-sump spanner and slim space-saving profile.

What is RO?

Reverse Osmosis (RO) is a process that occurs when water containing dissolved impurities is forced under pressure against a special synthetic semi-permeable membrane. Molecular forces prevent the dissolved impurities from passing through the membrane surface. The impurities are repelled by the membrane and carried away to drain by the water flow. Water molecules, however, are strongly attracted to the membrane surface and, when pressure is applied (e.g. town water pressure), the water molecules pass through the pores of the membrane surface leaving high purity water on the other side.

AT YOUR SERVICE

Custom high-flow faucet (with air gap) developed specifically for this system



FITS IN NICELY

Stand-alone compact profile takes up less space than other bulky systems



IT'S A SNAP

Quick-latch snaps into place and locks down all four tubing connectors in one easy step



BUILT-IN CONVENIENCE

System's support leg also serves as a handy sump wrench